

Anlage 02 zu Vorlage KUA/036/2025

Grabbeplatz 4, Kunsthalle Düsseldorf
Gesamtsanierung mit Schwerpunkt auf energetischer Optimierung
Ausführungs- und Finanzierungsbeschluss

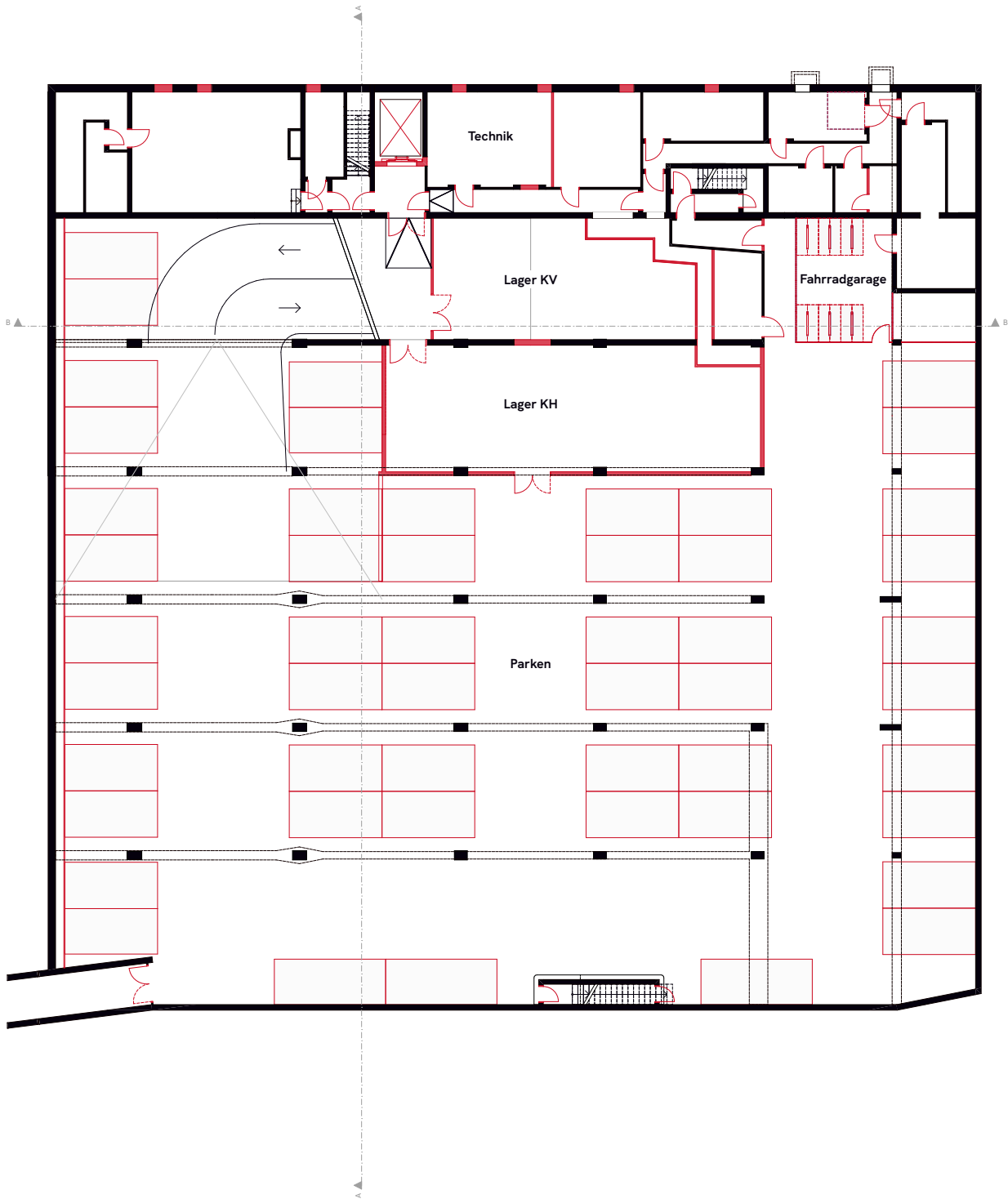
Entwurfsplanung (ohne Maßstab)

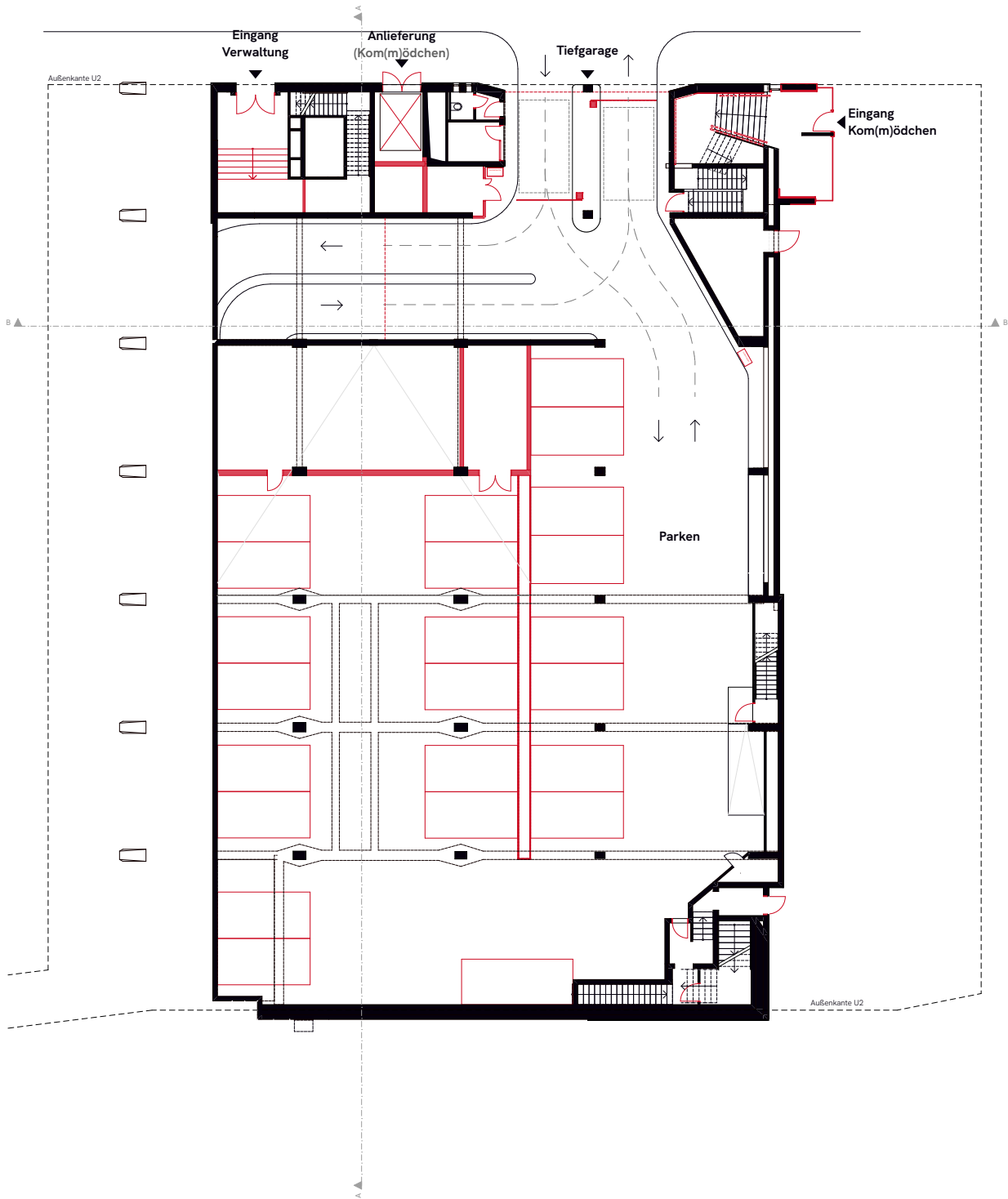


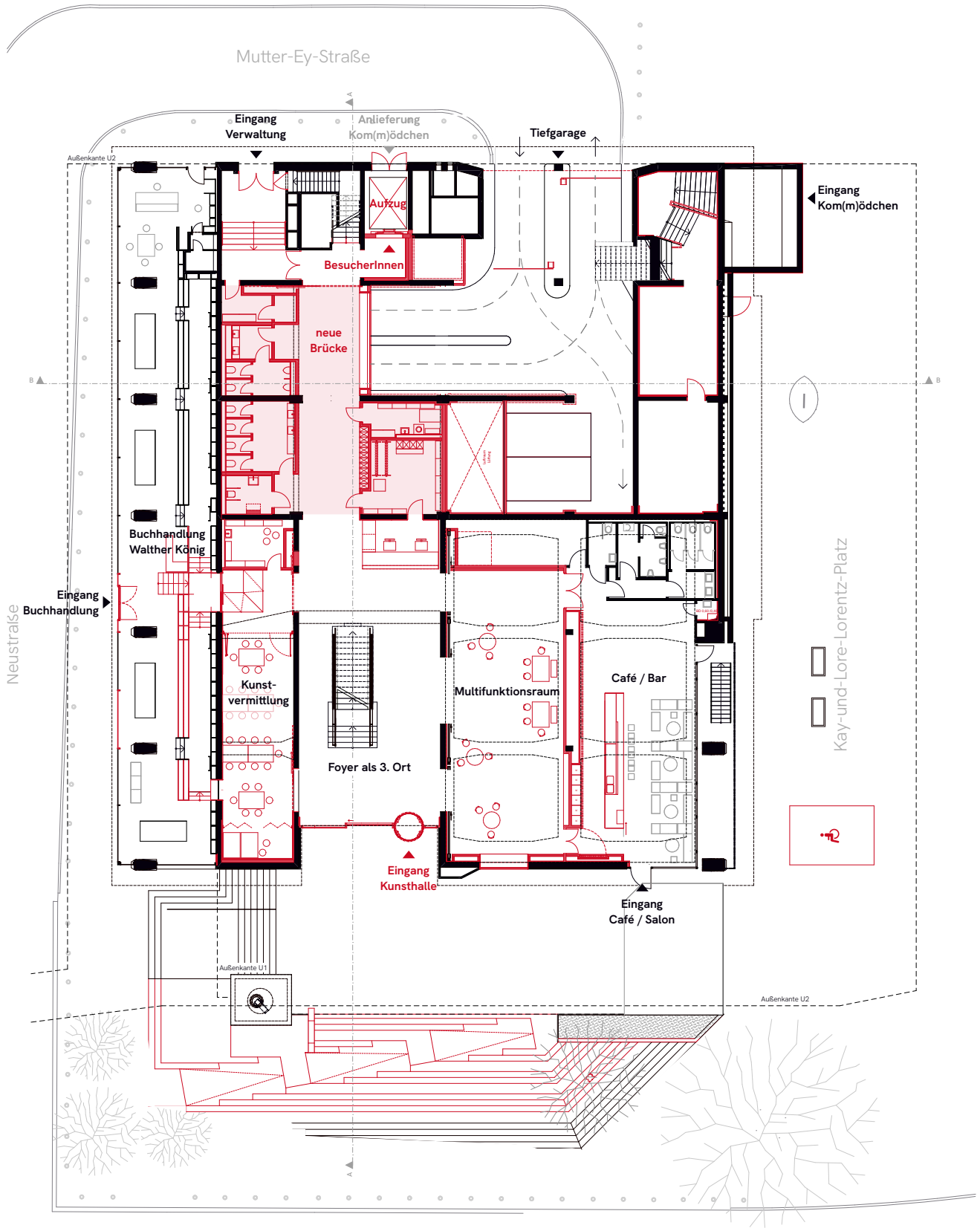
Erdgeschoss: Blick zur Kasse (Arbeitsstand)

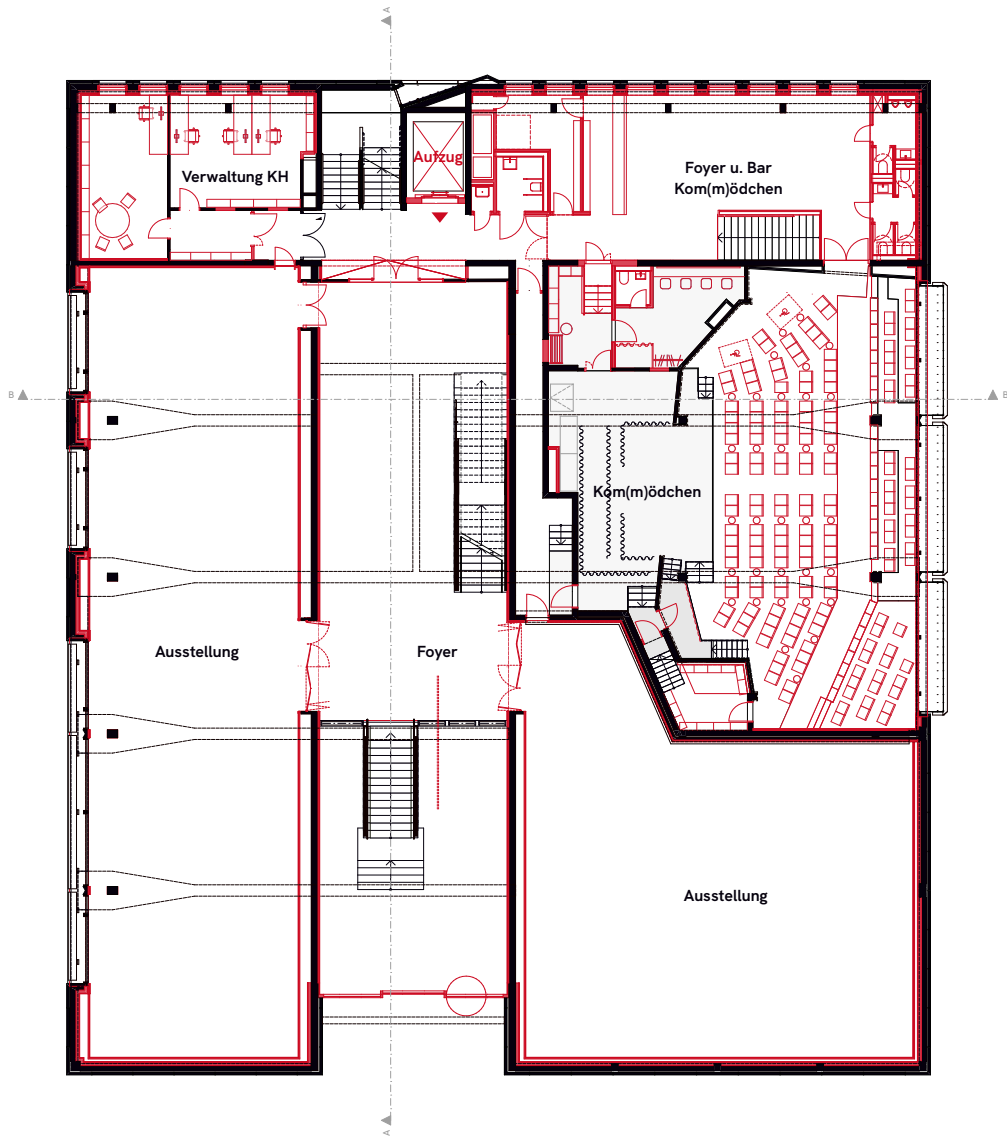


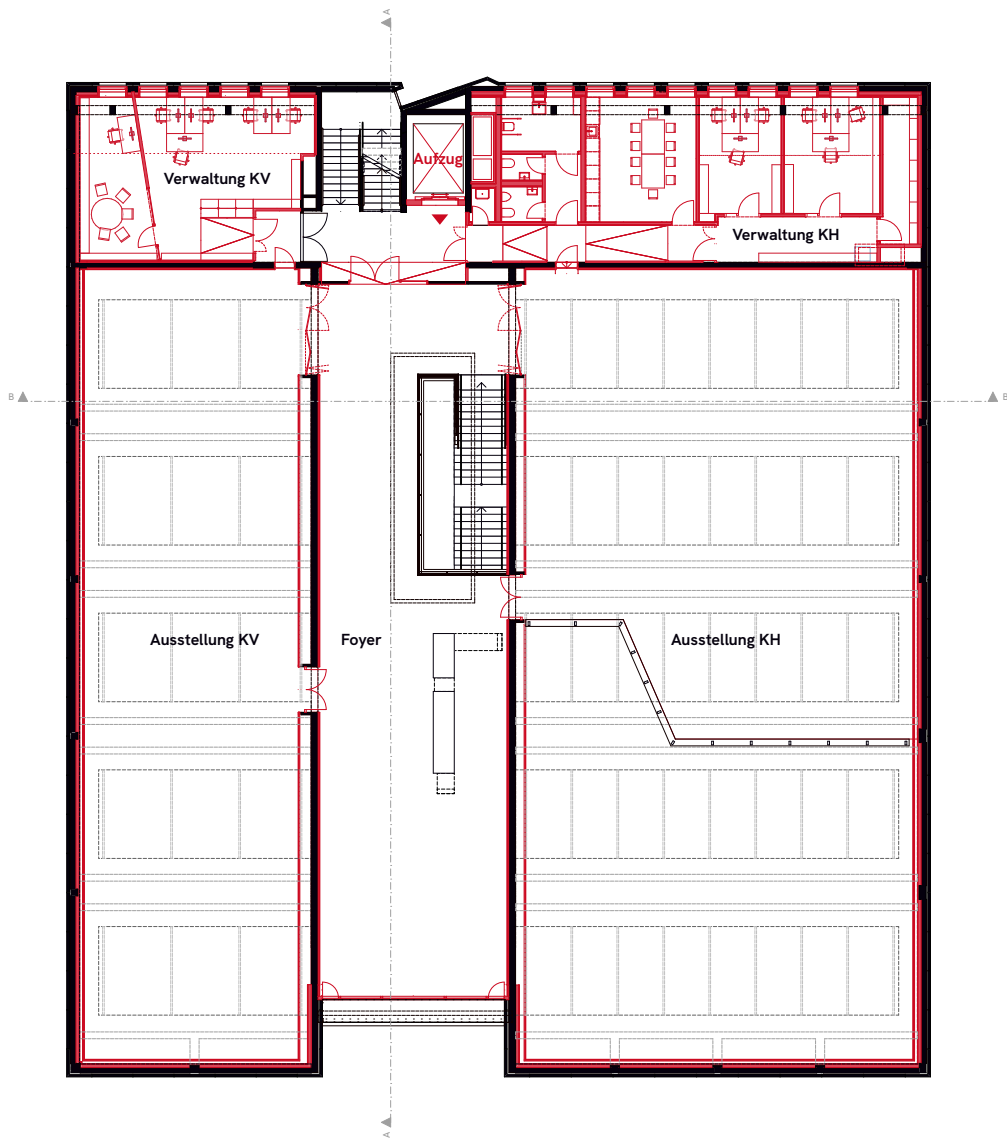
2.Obergeschoss: Blick in den Ausstellungsraum (Arbeitsstand)

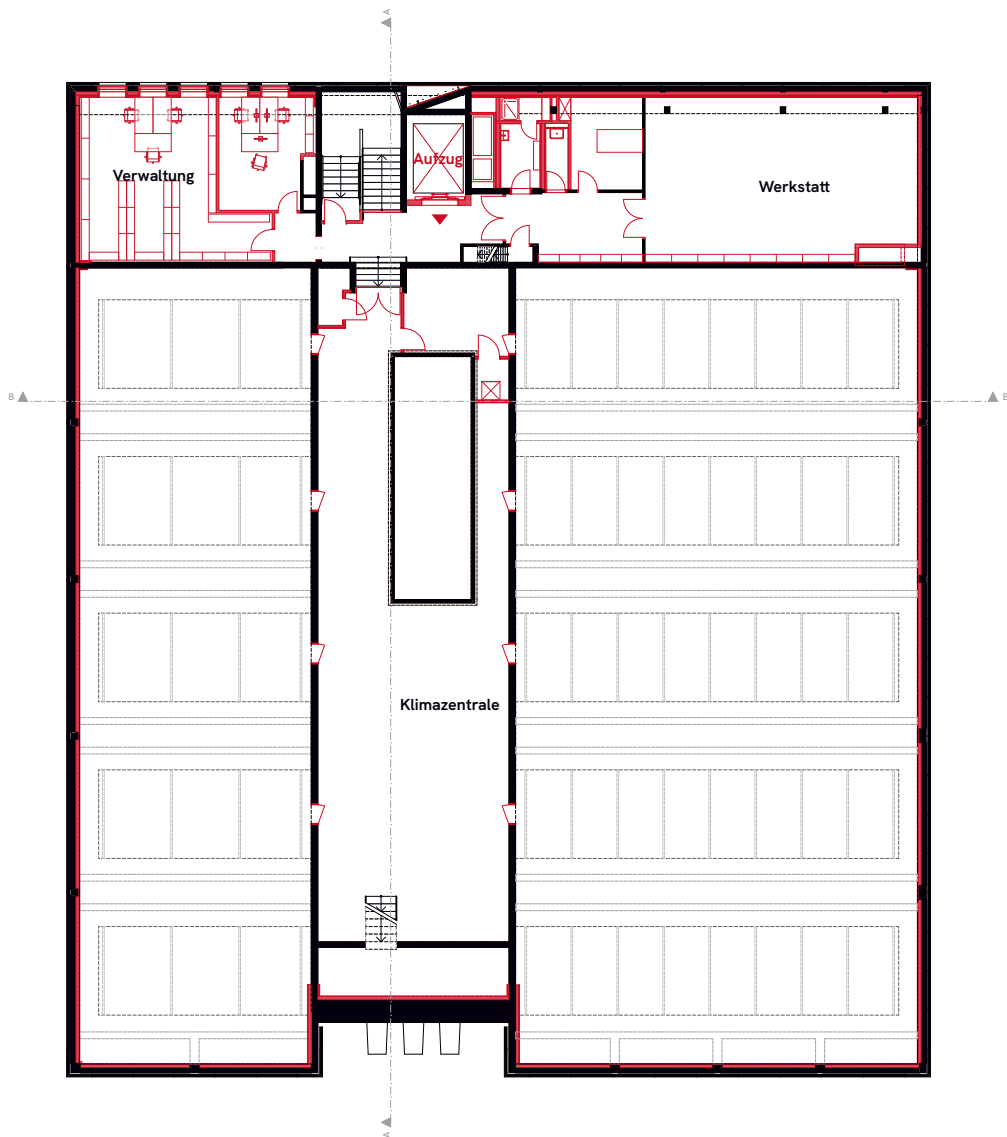


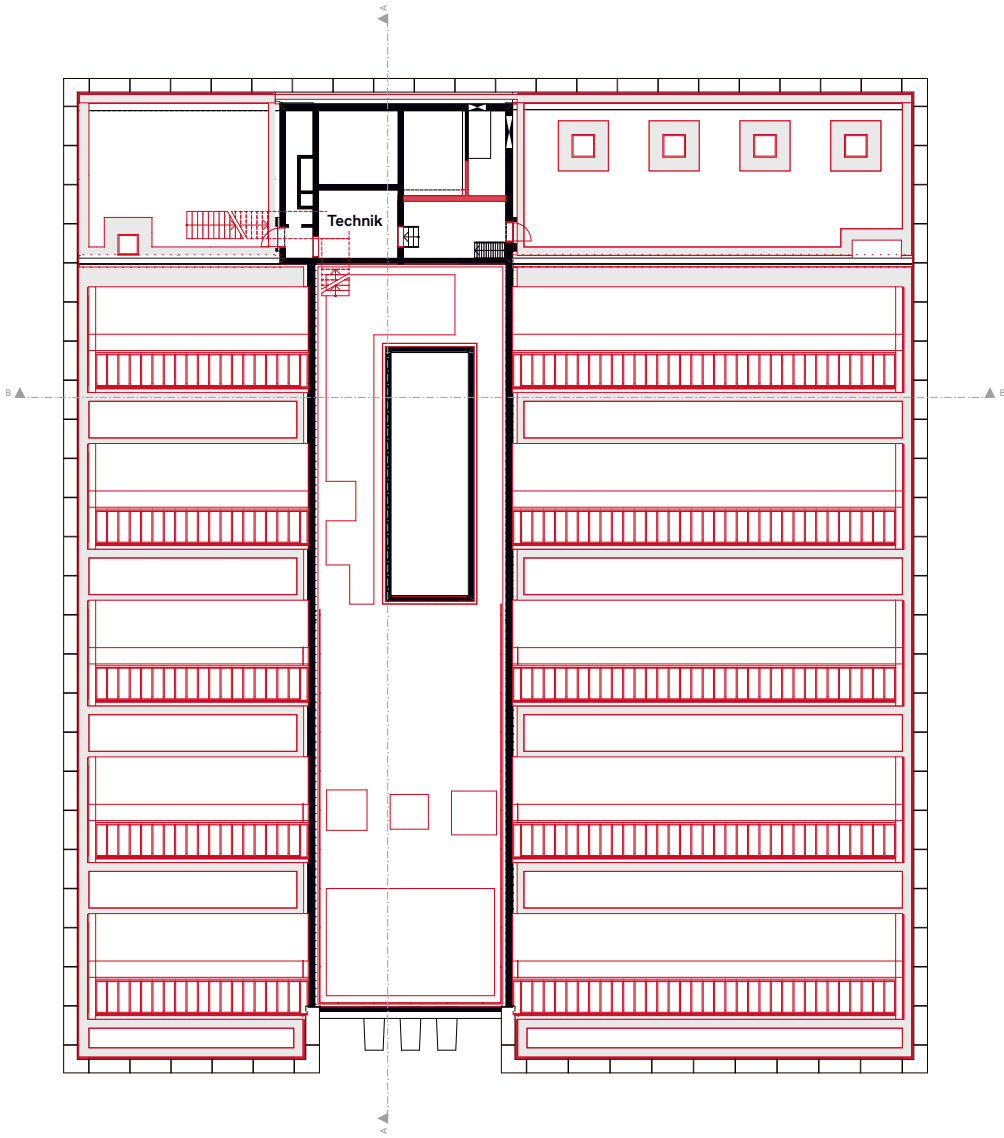


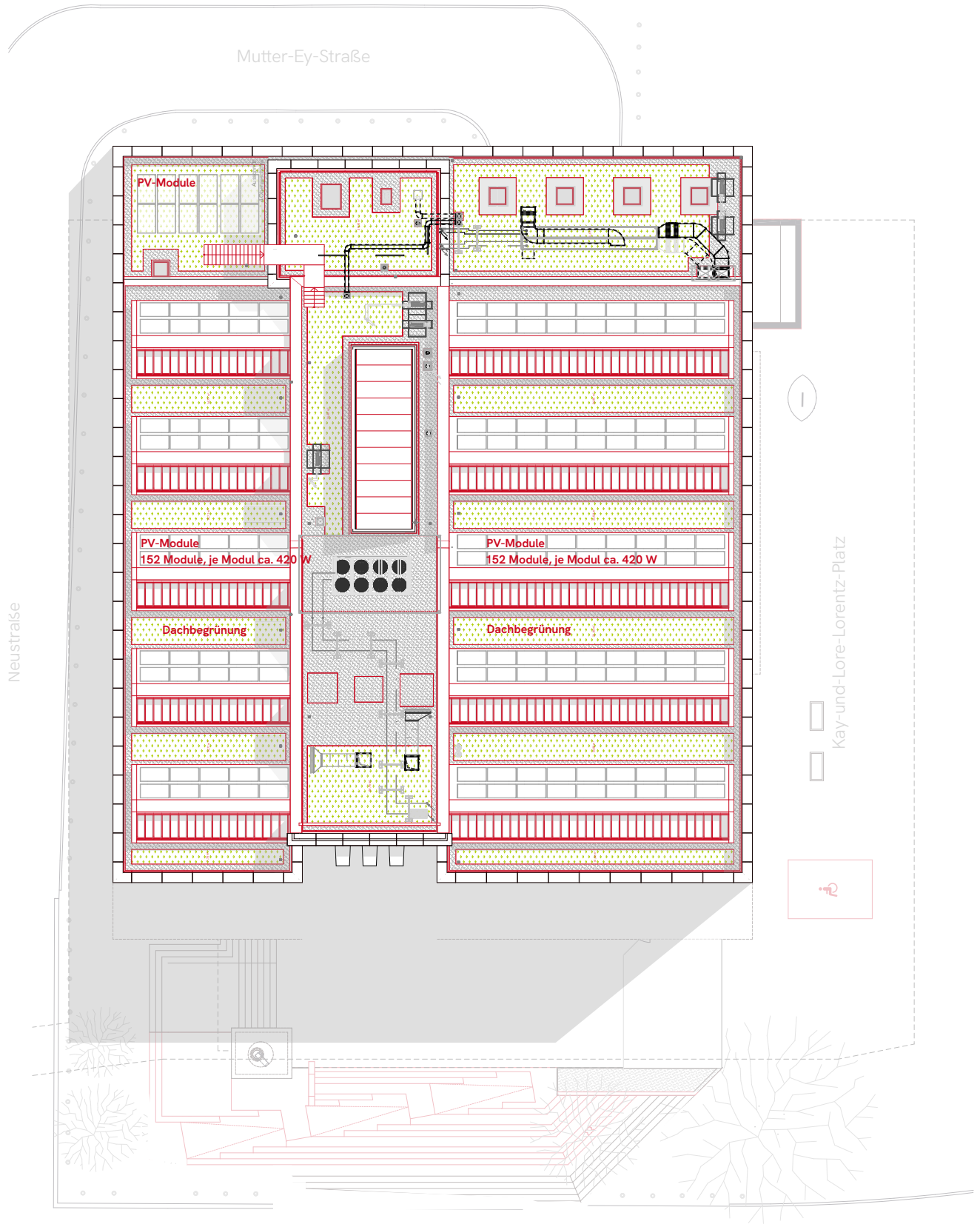




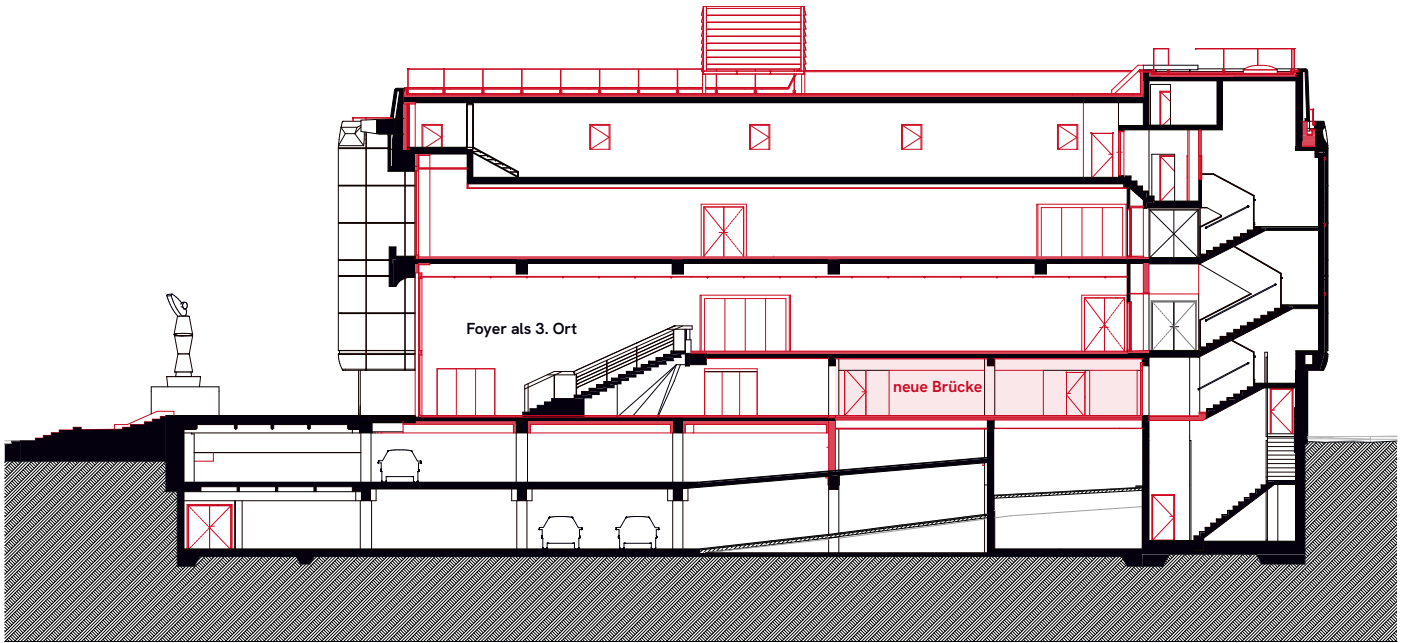




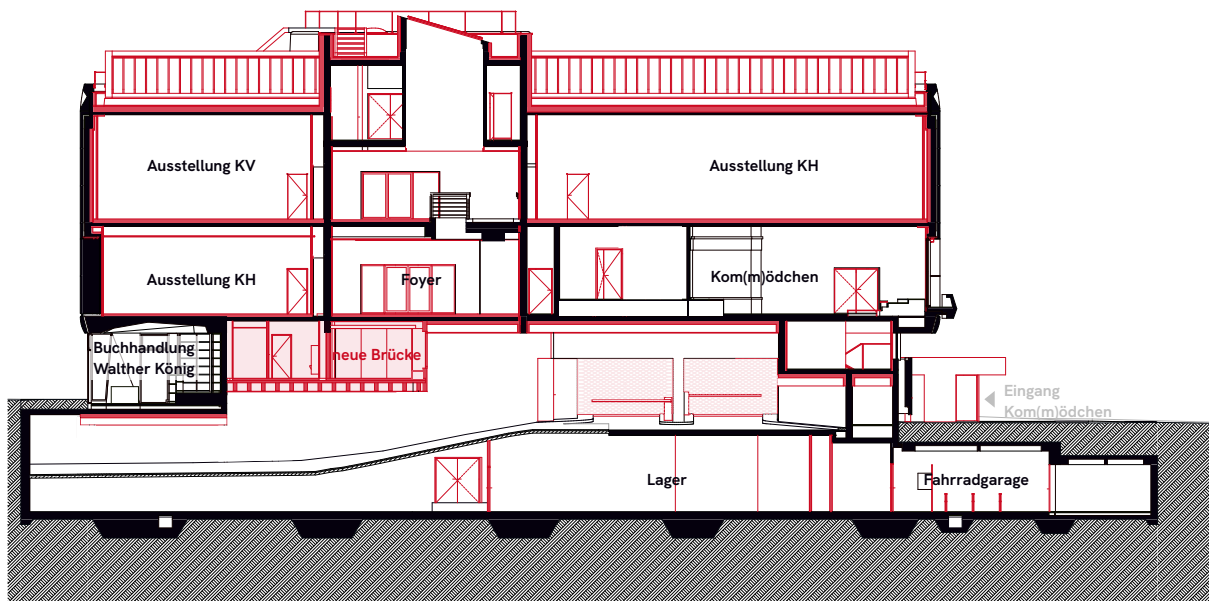




Dachaufsicht

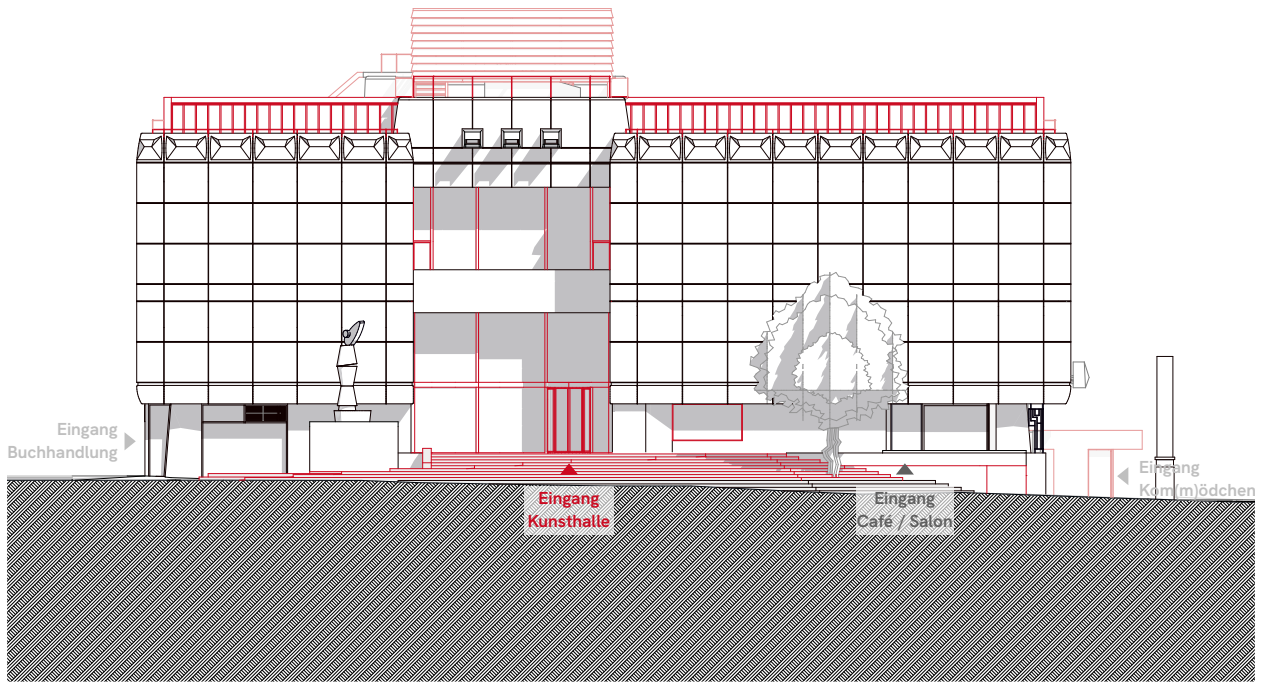


Längsschnitt A - A

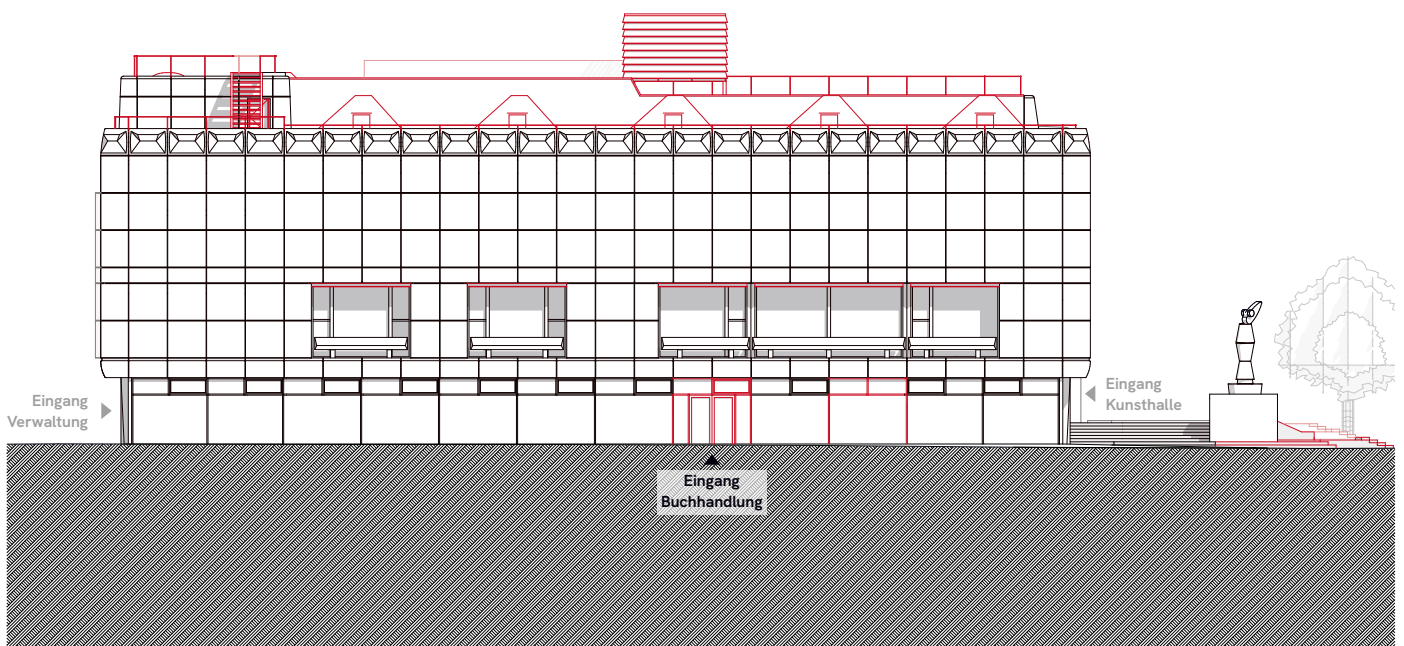


Querschnitt B - B

1 5m

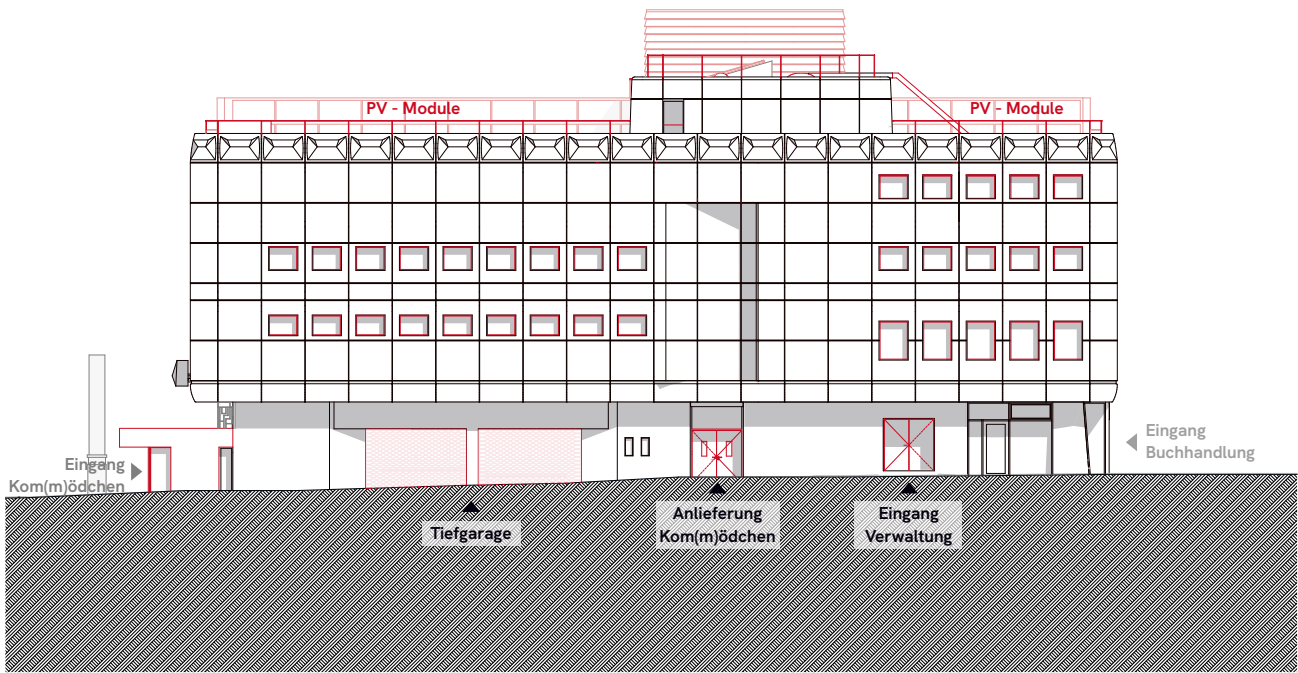


Ansicht Nord - Grabbeplatz

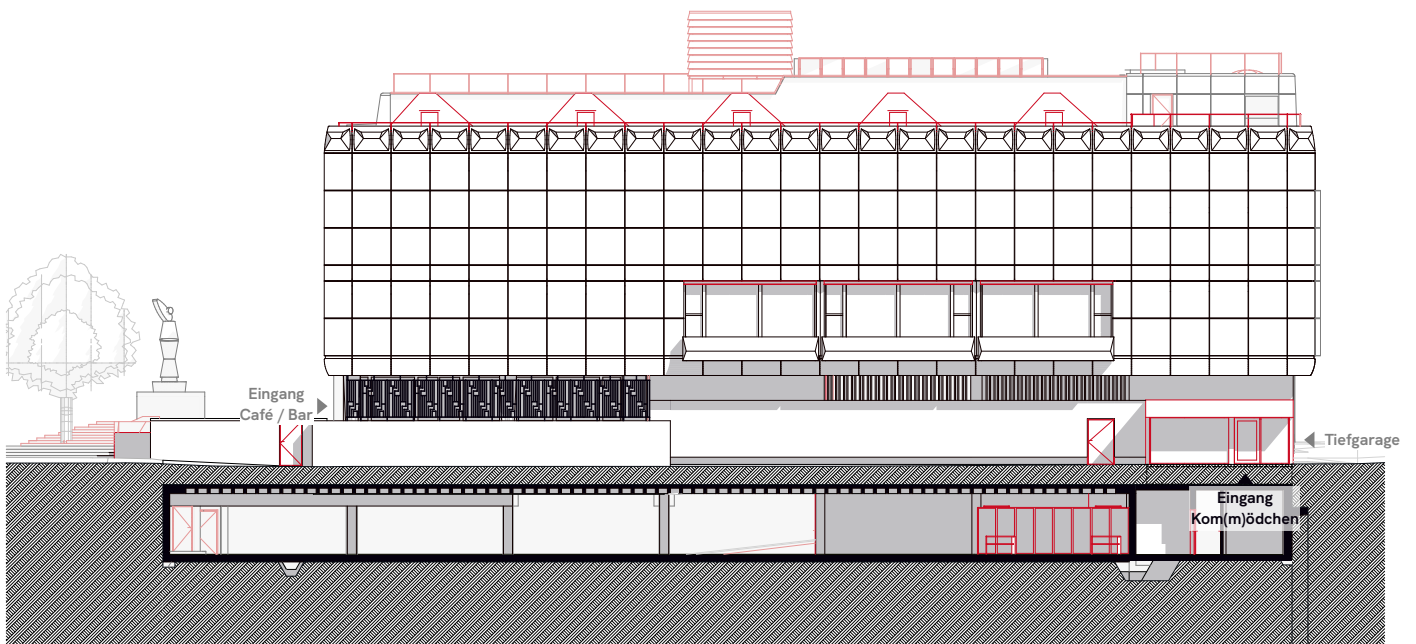


Ansicht Ost - Neustraße

1 5m



Ansicht Süd - Mutter-Ey-Straße



Ansicht West - Kay-und-Lore-Lorentz-Platz

1 5m